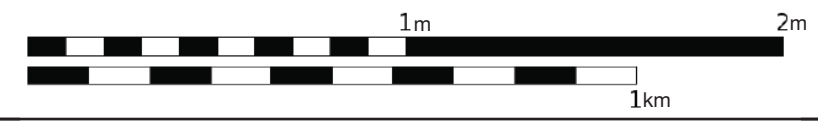


**Mileage Notes:**  
 A: 927P - Edison Stn - 7.4 mi  
 B: Edison Stn - Bayview SP - 7.6 mi  
 C: Bayview SP - Whitney - 3.8 mi  
 D: Swinomish Casino/Lodge - 4.5

**Section at a Glance**

Camping in Section 8 requires planning ahead. The trail passes through a combination of state and municipal park land and private lands. Respect private property, easements and park rules.

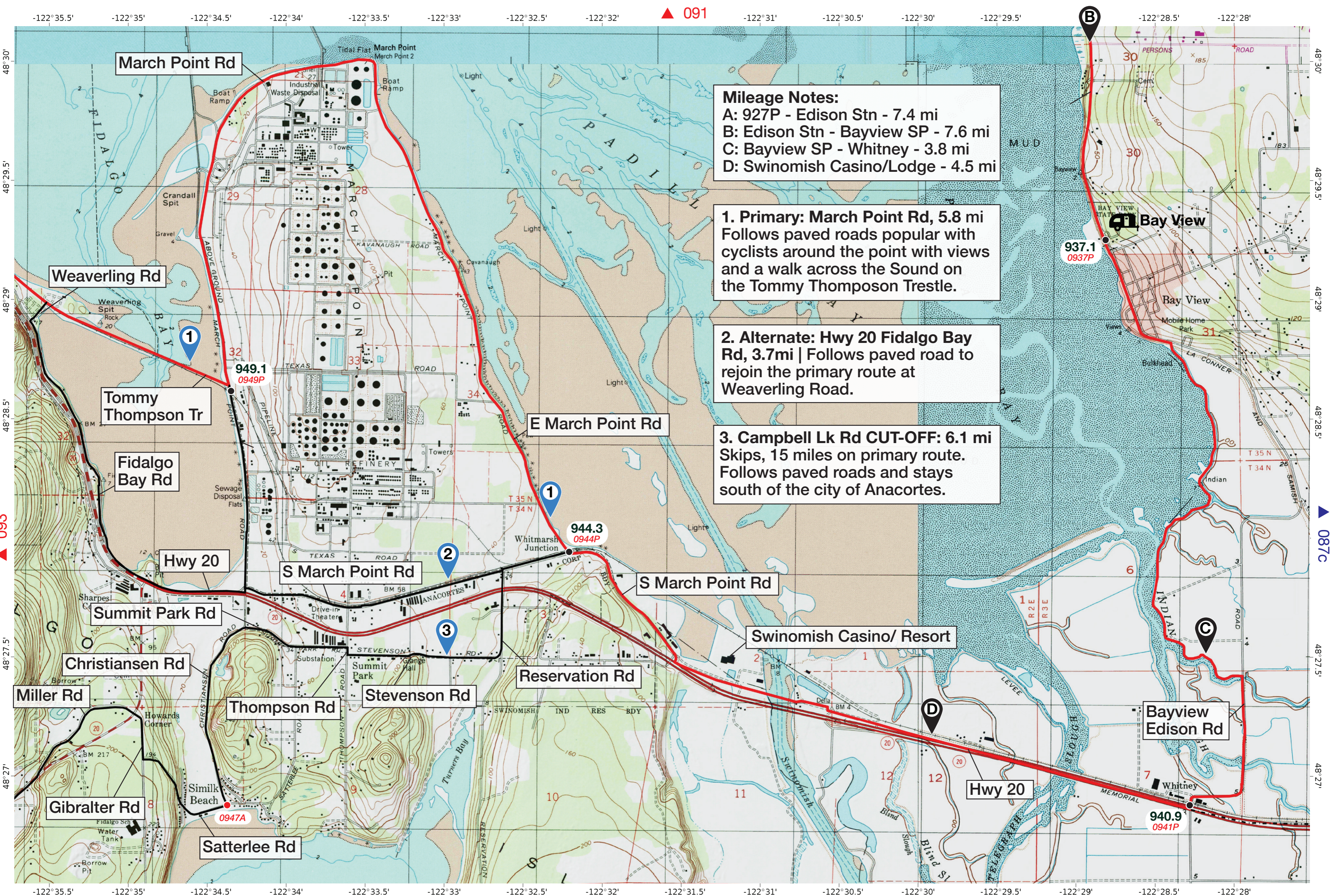


**Puget Sound**

**Section 8, 68 mi**

**091**





**Mileage Notes:**  
 A: 927P - Edison Stn - 7.4 mi  
 B: Edison Stn - Bayview SP - 7.6 mi  
 C: Bayview SP - Whitney - 3.8 mi  
 D: Swinomish Casino/Lodge - 4.5 mi

**1. Primary: March Point Rd, 5.8 mi**  
 Follows paved roads popular with cyclists around the point with views and a walk across the Sound on the Tommy Thompson Trestle.

**2. Alternate: Hwy 20 Fidalgo Bay Rd, 3.7mi** | Follows paved road to rejoin the primary route at Weaverling Road.

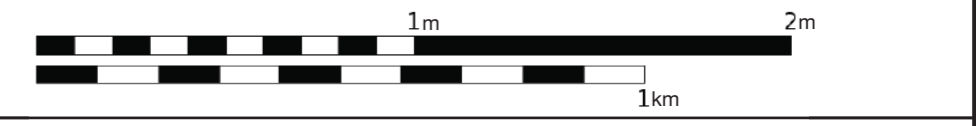
**3. Campbell Lk Rd CUT-OFF: 6.1 mi**  
 Skips, 15 miles on primary route. Follows paved roads and stays south of the city of Anacortes.

**Section at a Glance**

Camping or lodging in Section 8 requires planning ahead. The trail passes through a combination of state and municipal park land and private lands. Respect private property, easements and park rules.

Use caution while walking along the roadways in Section 8. Be advised to wear bright colors, face oncoming traffic, and pay attention to vehicles at all times. Also, enjoy the many dining and resupply options in the Puget Sound.

Mercator Projection | WGS84 | USNG 12UTV-12UUV



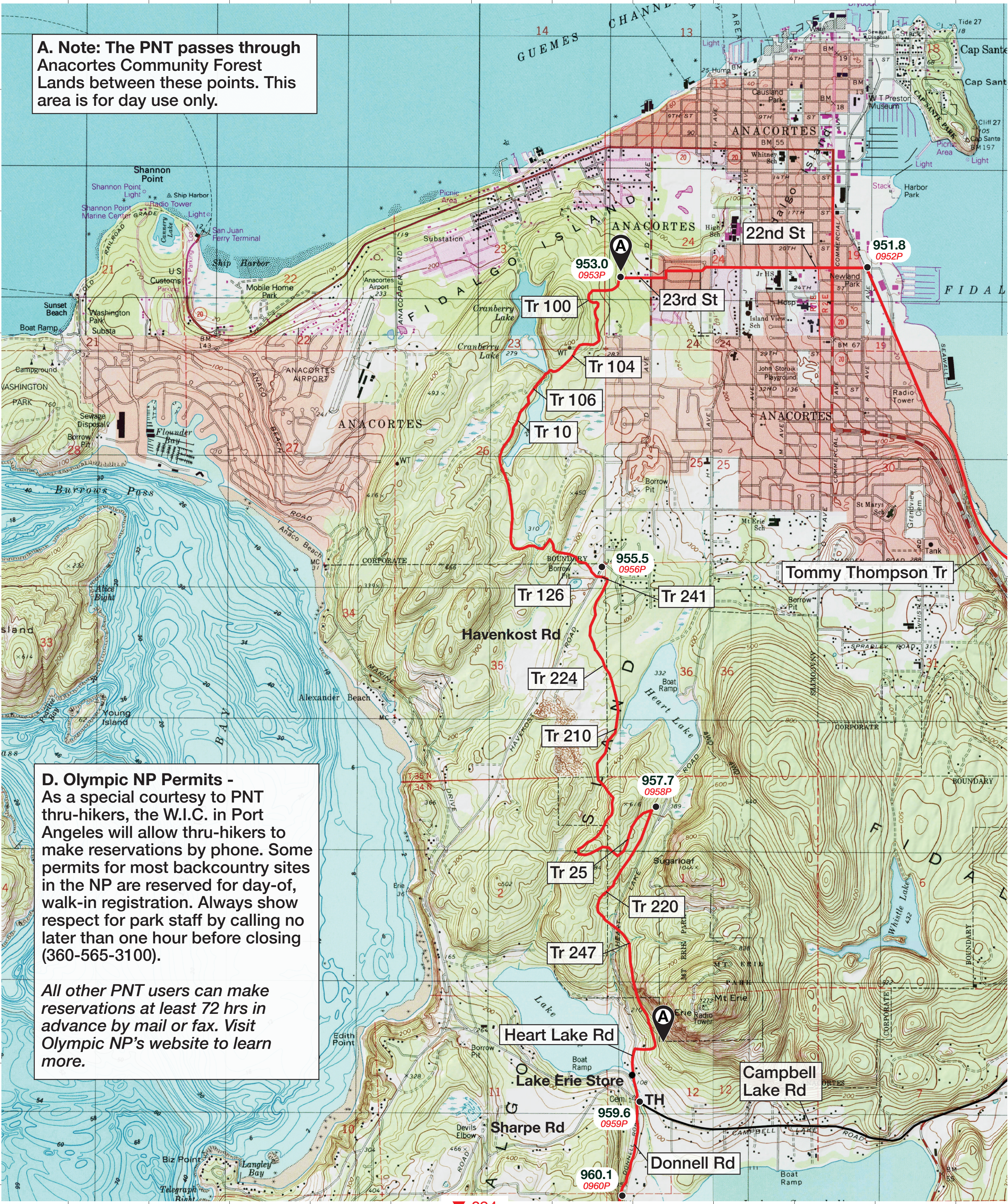
**Puget Sound**  
**Section 8, 68 mi**



**A. Note: The PNT passes through Anacortes Community Forest Lands between these points. This area is for day use only.**

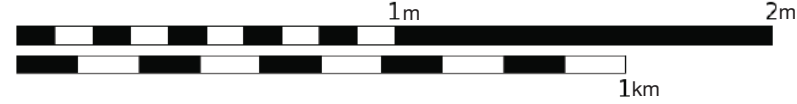
**D. Olympic NP Permits -**  
 As a special courtesy to PNT thru-hikers, the W.I.C. in Port Angeles will allow thru-hikers to make reservations by phone. Some permits for most backcountry sites in the NP are reserved for day-of, walk-in registration. Always show respect for park staff by calling no later than one hour before closing (360-565-3100).

*All other PNT users can make reservations at least 72 hrs in advance by mail or fax. Visit Olympic NP's website to learn more.*



**Section at a Glance**

Camping in Section 8 requires planning ahead. The trail passes through a combination of state and municipal park land and private lands. Respect private property, easements and park rules.

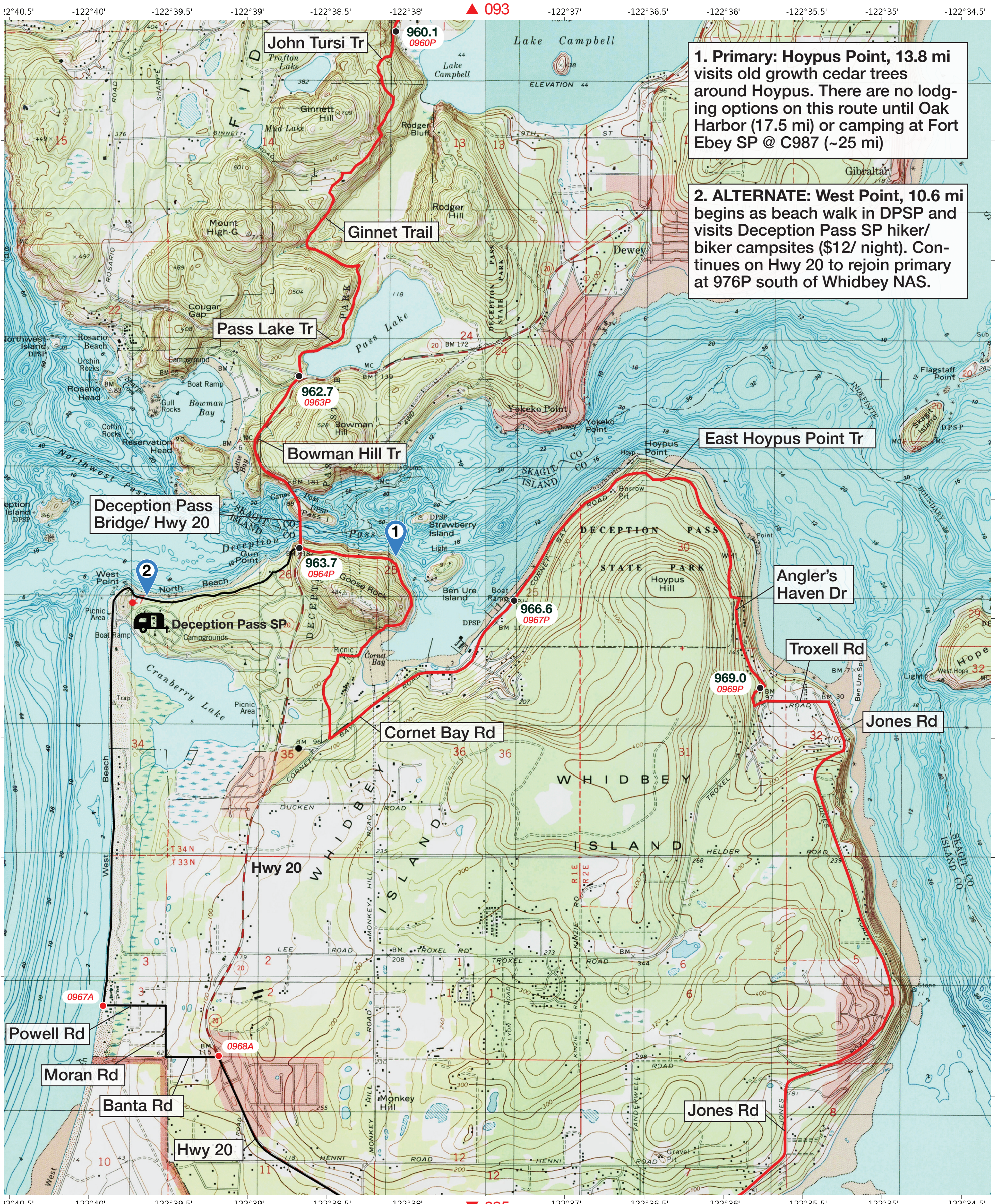


**Puget Sound**

**Section 8, 68 mi**

**093**



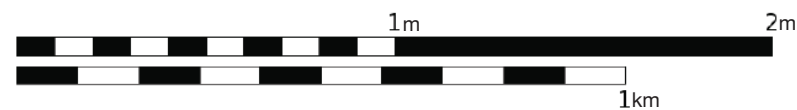


**1. Primary: Hoypus Point, 13.8 mi** visits old growth cedar trees around Hoypus. There are no lodging options on this route until Oak Harbor (17.5 mi) or camping at Fort Ebey SP @ C987 (~25 mi)

**2. ALTERNATE: West Point, 10.6 mi** begins as beach walk in DPSP and visits Deception Pass SP hiker/ biker campsites (\$12/ night). Continues on Hwy 20 to rejoin primary at 976P south of Whidbey NAS.

**Section at a Glance**

Camping in Section 8 requires planning ahead. The trail passes through a combination of state and municipal park land and private lands. Respect private property, easements and park rules.



**Puget Sound**

**Section 8, 68 mi**

**094**